



"ENSURING HIGH LEVELS OF LEARNING FOR ALL"

BAINBRIDGE-GUILFORD

CENTRAL SCHOOL DISTRICT



JUNIOR / SENIOR HIGH SCHOOL

- Exterior doors and hardware improvements, including additional security features
- Kitchen renovations and upgrades to meet Dept. of Health compliance
- Auditorium lighting upgrades
- Replace Select Air Handling Units
- Replace Soccer field parking lot pavement
- Soccer field drainage improvements

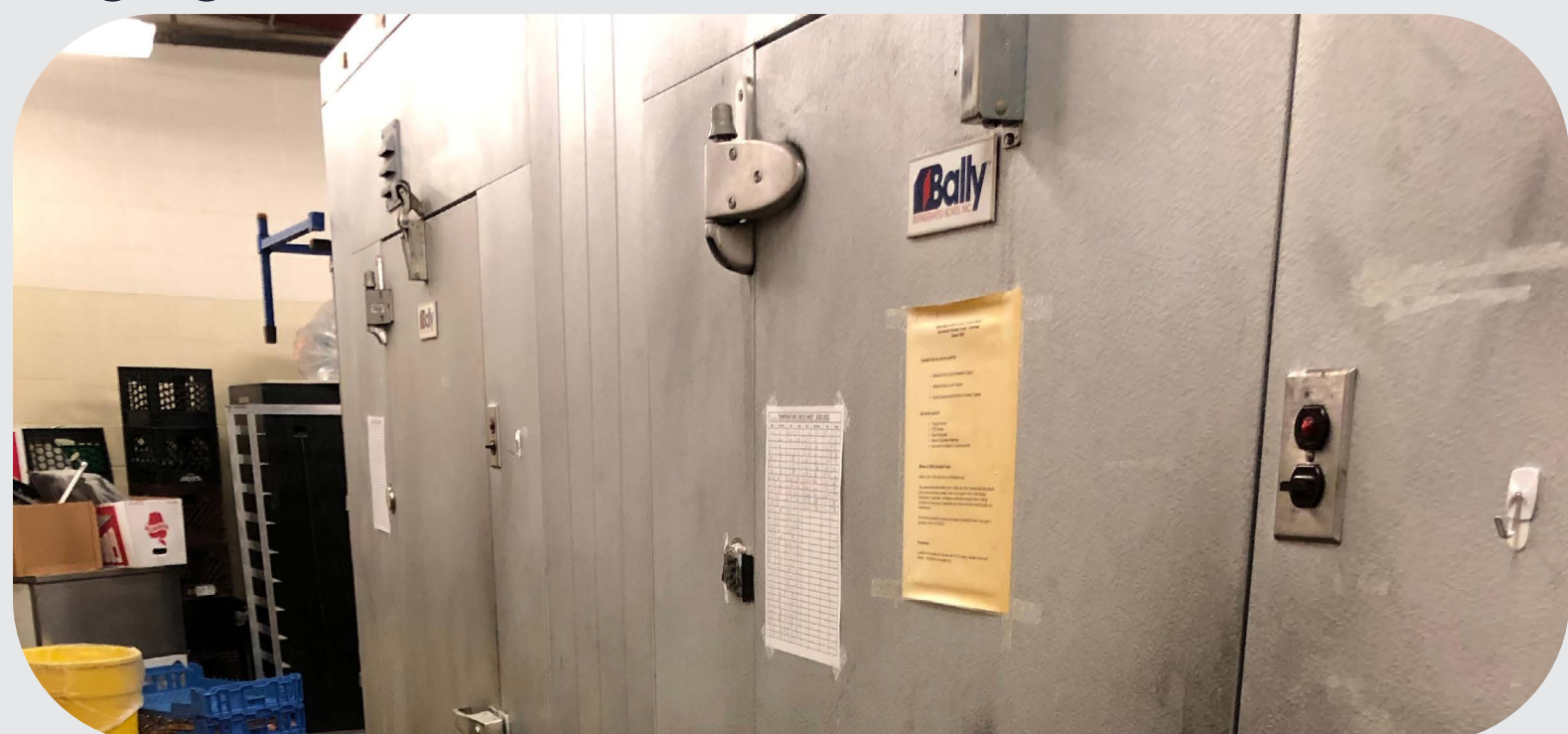
Soccer Field Drainage



Deteriorating Parking Lot

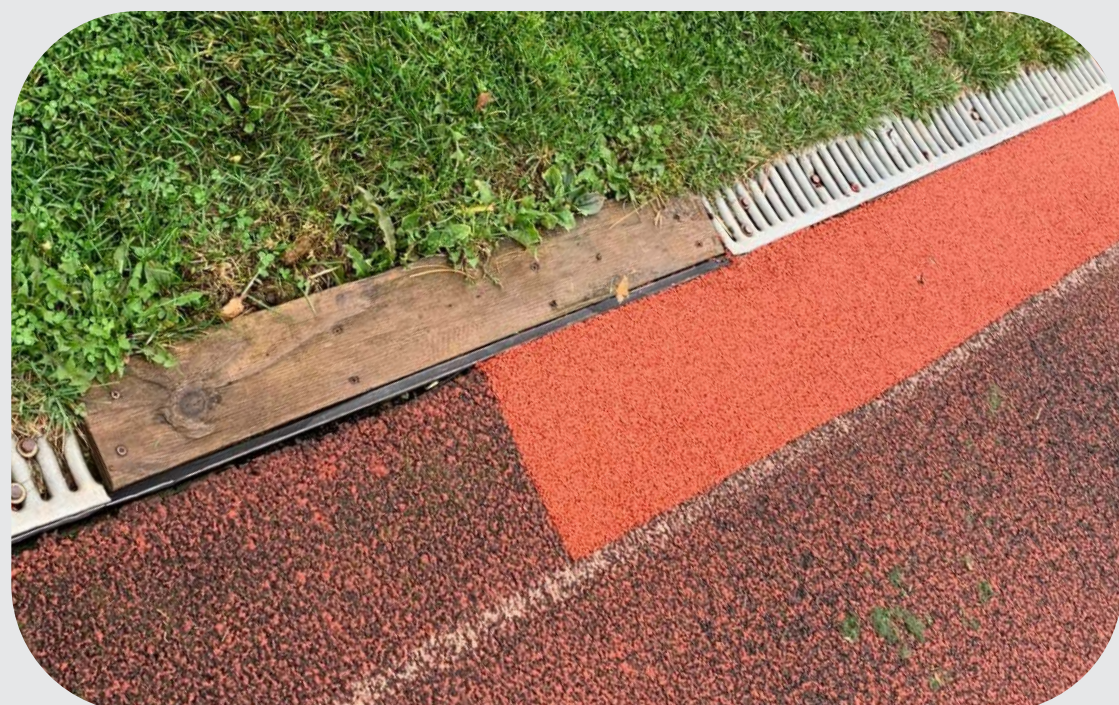


Aging Kitchen



ATHLETIC FACILITY UPGRADES

Failing Track Drainage

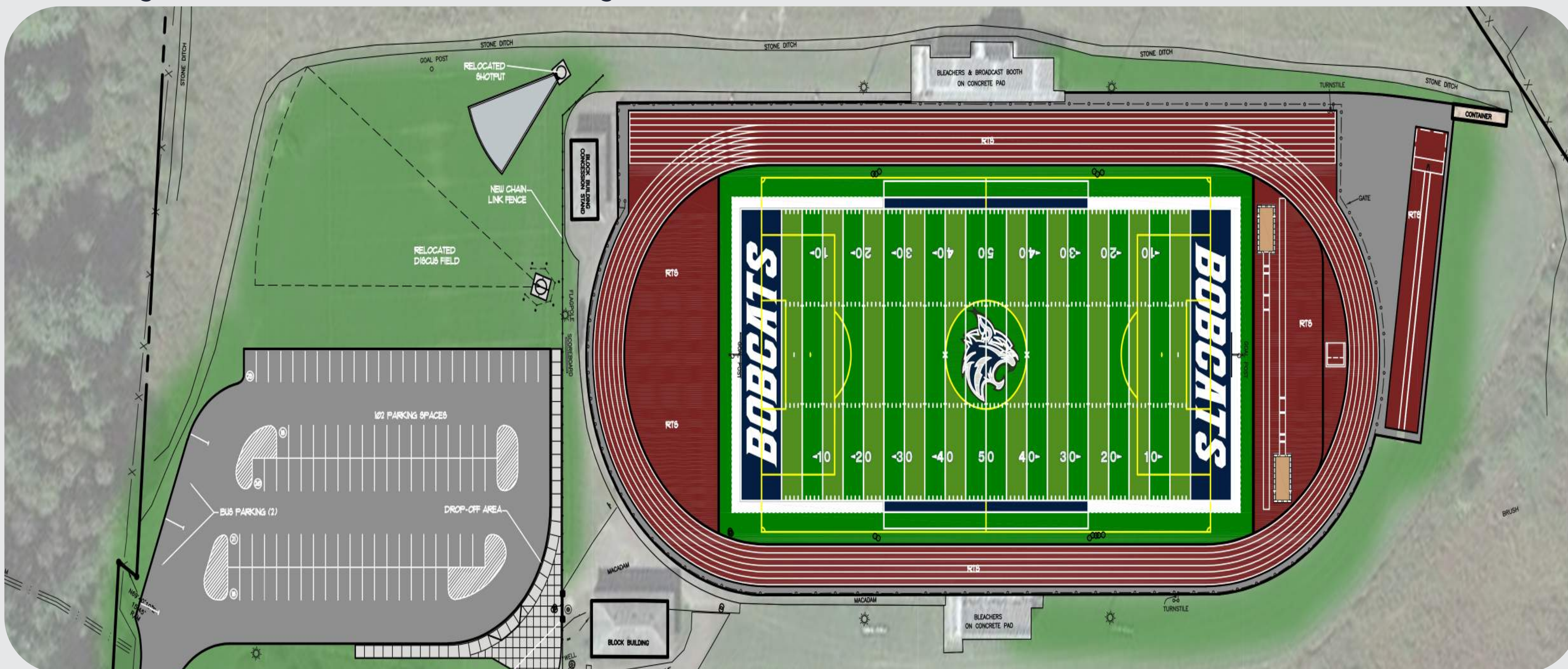


Aging Track Surfaces



- Replace existing grass athletic field with artificial turf field
- Track resurfacing and drain replacement, reconstruction of field events with addition of steeple chase pit
- 100+ Vehicle parking lot addition adjacent to athletic field
- Fencing Improvements

Rendering of New Athletic Field, Track, and Parking Lot



Capital Project Vote: Wednesday, December 7th, 12 pm - 9 pm
Voting Locations: Greenlawn Elementary School + Guilford Elementary School

NO ADDITIONAL TAX IMPACT